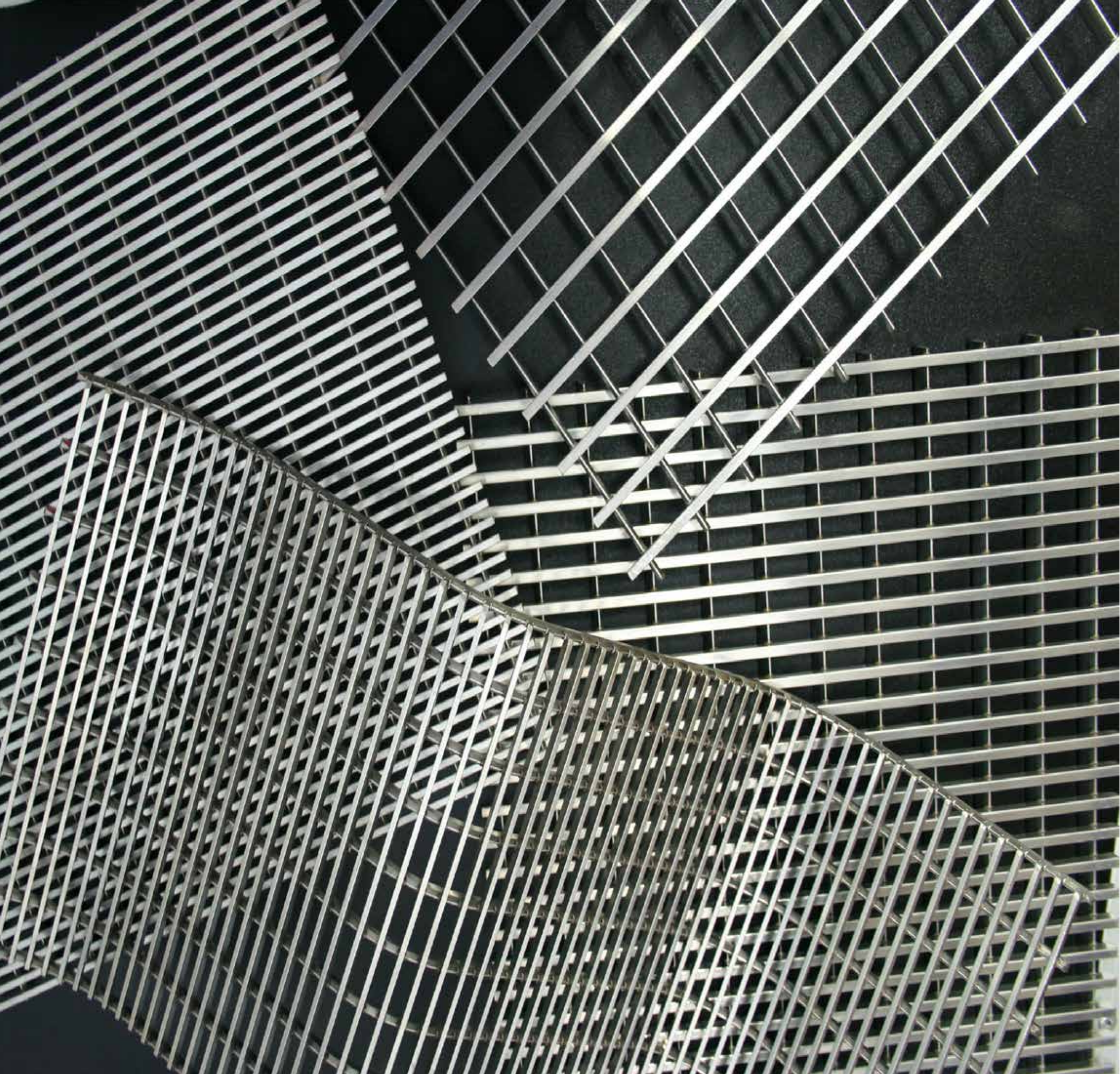




A brand of  
Aqseptence Group





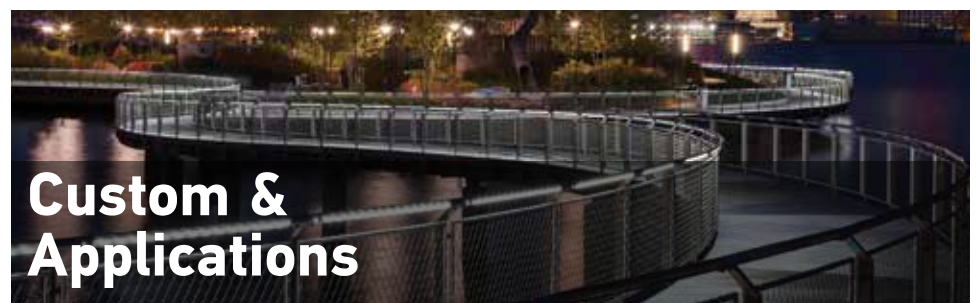
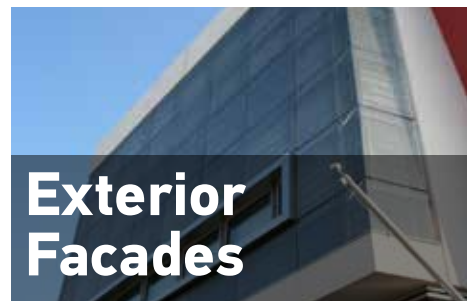
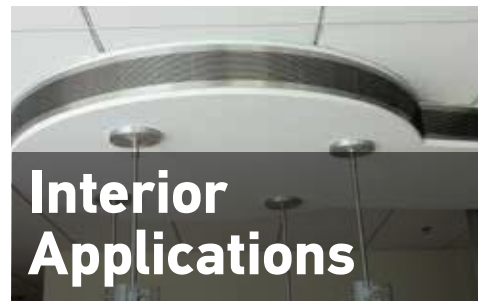
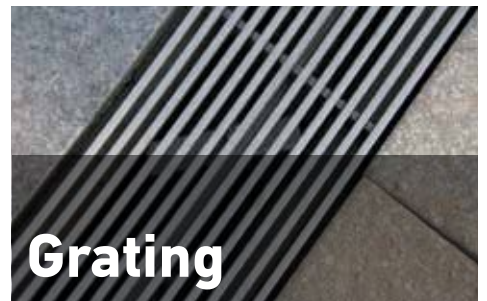
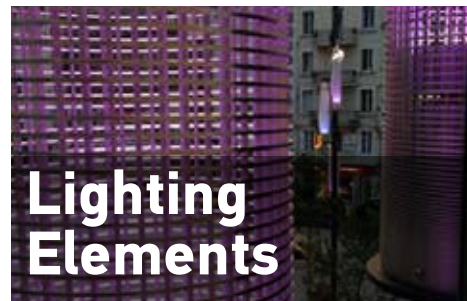
## WELCOME

# Dare to Design the Future

From the first flicker of an idea for a stunning space through the details of planning and documentation, Johnson Architectural Elements is a trusted partner for bringing your vision to life.

Drawing on more than century of screen manufacturing innovation, we consult with you to explore boundary-bending possibilities, respectfully consider the requirements of your project and draft customized technical solutions that create excellence in both form and function.

Your next architectural adventure awaits—count on us for the highest engineering standards, precision in fabrication and a collaborative relationship where imagination becomes reality.





# Lighting Elements

The University of Chicago – Chicago, IL, USA  
Light Masts — A James Carpenter Design  
©Tom Rossiter





INSPIRATION IN PRACTICE

Lighting Elements

Dramatic designs coupled with illumination and way-finding functionality.

Johnson Architectural Elements create unique lighting elements from delicate bollards to clusters of towering light masts.

- Light Masts
- Light Fixtures
- Accent Elements

- 01. South Pointe Park – Miami Beach, FL, USA  
Light Masts
- 02. Centre ' Village – Minneapolis, MN, USA  
Light Masts
- 03. City Square – Annonay, France  
Lights
- 04. The University of Chicago – Chicago, IL, USA  
Light Masts — A James Carpenter Design
- 05 . | 06. Office building – Minneapolis, MN, USA  
Lights
- 07. University of Alaska – Anchorage, AK, USA  
Light Masts
- 08. Hotel Kube – Paris, France  
Lighting Columns





# Grating



## INSPIRATION IN PRACTICE

### Grating

Johnson Architectural Elements’ proprietary manufacturing process allows for increased resistance in the screen, while keeping the visual transparency. Material, dimensions, finish and load capacity are calculated by engineers to insure that technical requirements are met.

- Ventilation Grates
- Drainage Grates
- Wheelchair Access Ramps
- Stairs and Footbridges

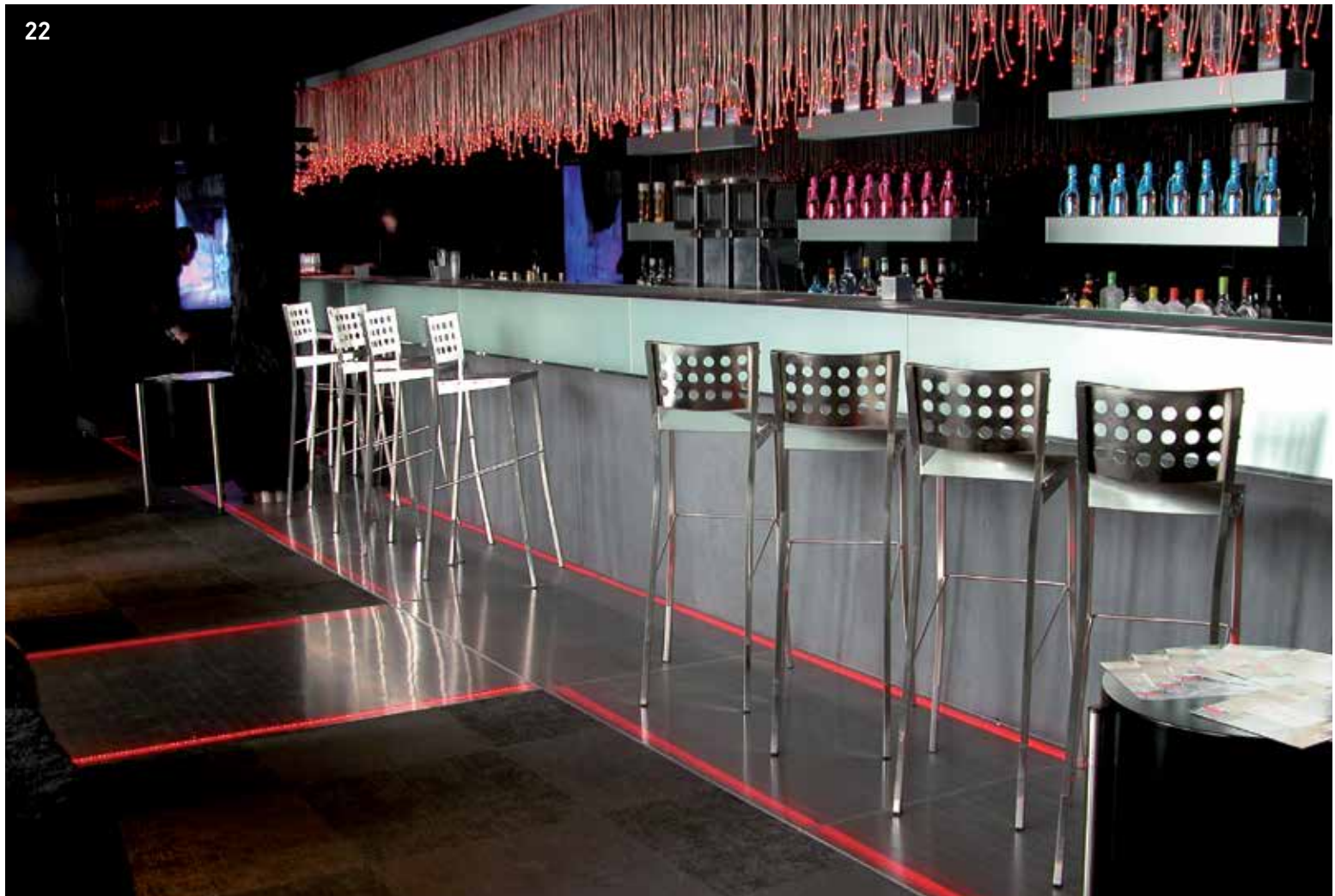


09. St. Cloud Hospital – St. Cloud, MN, USA  
Floor Grating

10.| 11.| 13. Melbourne Convention and Exhibition Centre –  
Melbourne, Australia Floor Grating

12. Residence Inn – New York, NY, USA  
Floor Grating





**SUPPORT**

## Manufacturing Expertise

Evolved from the legacy of Johnson Screens, Johnson Architectural Elements has vast experience in stainless steel welding and shaping that you won't find anywhere else. An exclusive architectural manufacturing team, plus fabricators and welders are devoted to delivering the highest quality materials.

14. World Trade Center – New York, NY, USA  
Drainage Grating

15. Wells Fargo Bank – Minneapolis, MN, USA  
Floor Grating

16. Pousada de Santa Marinha –  
Guimarães, Portugal  
Wheelchair Access Ramp

17. Office building – Susono, Japan  
Interior Footbridge

18. Public restroom – Sydney, Australia  
Drain and Floor Grating

19. Lincoln Center – New York, NY, USA  
Floor Grates

20. Broad Street – New York, NY, USA  
Swimming Pool Drain, Trench and  
Surrounding Grates

21. Victoria Bridge – Townsville, Australia  
Drainage Grates

22. Hotel Kube – Paris, France  
Floor Grates with Integrated Lights



# Landscape Elements







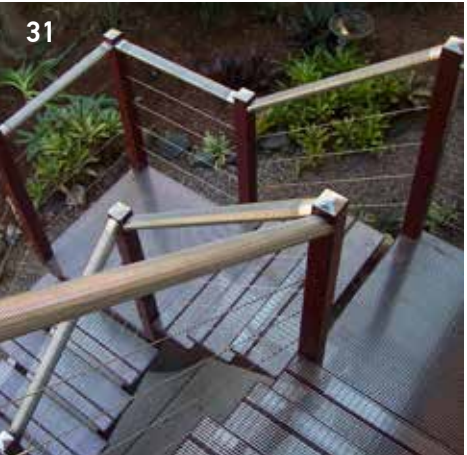
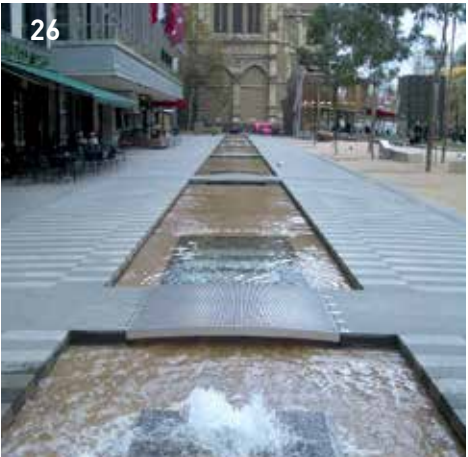
INSPIRATION IN PRACTICE

Landscape Elements

Versatile, stable and functional — Johnson Architectural Elements stainless steel products are ideal for spaces, surfaces and other functional elements in exterior applications.

- Benches/Seats
- Fences
- Garbage Cans
- Tree Surrounds
- Bollards
- Handrails
- Walkway Grates

- 23. Accenture Tower – Minneapolis, MN, USA  
Bench Seats
- 24. UBS Financial Services – St. Paul, MN, USA  
Flag Pole Cover
- 25. Baldwin Public Library – Birmingham, MI, USA  
Security Gate
- 26. City Square – Melbourne, Australia  
Footbridge
- 27. Frankston Railway Station – Melbourne, Australia  
Seats
- 28. Office complex – Sydney, Australia  
Bollard with Integrated Lights
- 29. University of Western Sydney – Sydney, Australia  
Bench Seats
- 30. Office building – Brisbane, Australia  
Garbage Can
- 31. Private residence – Brisbane, Australia  
Handrails and Stairs
- 32. Hoboken Pier – Hoboken, NJ, USA  
Handrails — A James Carpenter Design
- 33. RMT University – Melbourne, Australia  
Tree Surrounds and Grating
- 34. Battery Park City – New York, NY, USA  
Fence — Rogers Partners & James Carpenter Design





# Interior Applications



INSPIRATION IN PRACTICE

## Interior Applications

Johnson Architectural Elements can design and manufacture screens that protect, cover and secure various utility items — all while adding a stunning visual element to the surroundings.



- Ventilation Covers
- Wall Covers
- Room Dividers
- Internal Security Gates

- 35. Boe Valley College – Calgary, AB, Canada  
Security Screen
- 36. Johnson Bank – Madison, WI, USA.  
Interior Accents
- 37. Grant Thornton – Los Angeles, CA, USA  
Privacy Screen
- 38. Weatherford International – Houston, TX, USA  
Interior Accents
- 39. Heathrow Airport – London, England  
Utility Cover





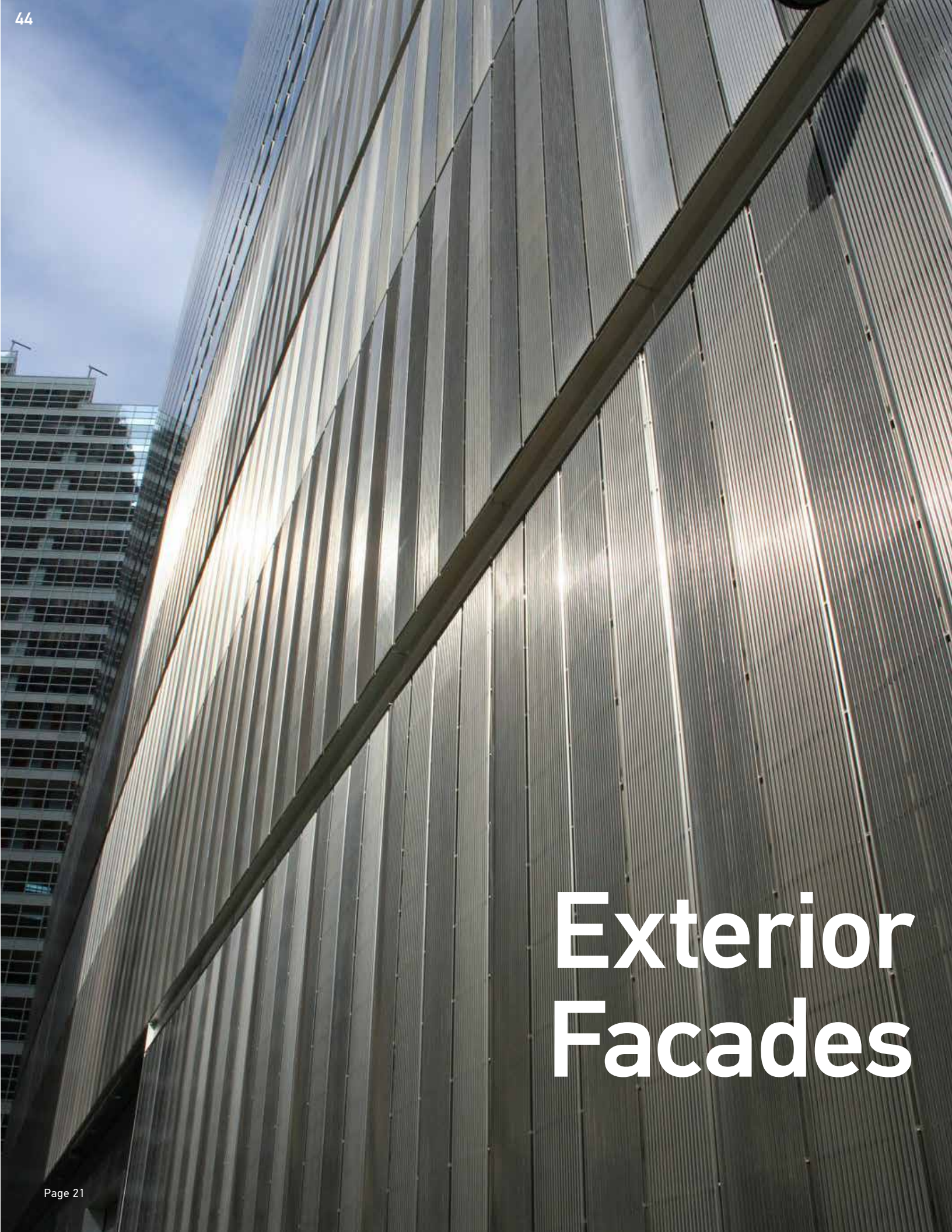
## INSPIRATION IN PRACTICE

### Vertical Columns

Johnson Architectural Elements' vertical columns, will transform construction structures and technical service columns into a stunning decorative element. Construction specifications will be defined, depending on the technical and visual aspect requirements.

- 40. Century College – White Bear Lake, MN, USA  
Column Covers
- 41. Caf  t  ria d'entreprise – Paris La D  fense, France  
Structural Column Cladding
- 42. Kew Gardens Train Station – New York, NY, USA  
Column Covers
- 43. Torrey Pines Bank – Los Angeles, CA, USA  
Column Covers





# Exterior Facades

45



46



47



48



## INSPIRATION IN PRACTICE

### Exterior Facades

By varying the shape, size and tilt of the wire used, light can be filtered or directed in a variety of ways using Johnson Architectural Elements' exterior facades. Custom exterior facades can hide technical equipment, protect glass windows from impacts and provide a dramatic effect when backlit at night.

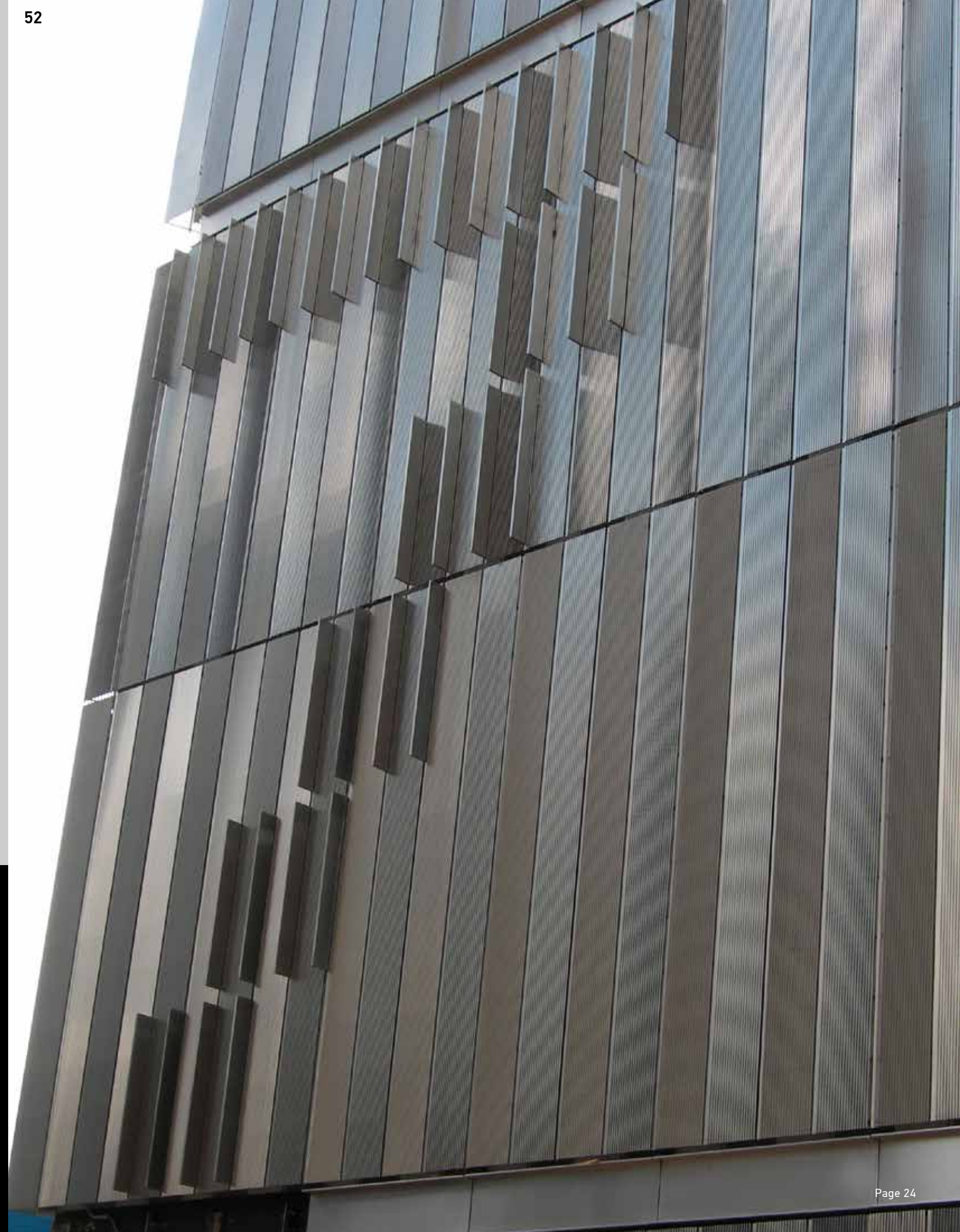
44. 7 World Trade Center – New York, NY, USA  
Exterior Facade and Wall Cladding —  
A James Carpenter Design

45. Guthrie Theater – Minneapolis, MN, USA  
Sun Shade

46. Main Fargo Public Library – Fargo, ND, USA  
Sun Shade

47. 48. 7 World Trade Center – New York, NY, USA  
Exterior Facade and Wall Cladding —  
A James Carpenter Design





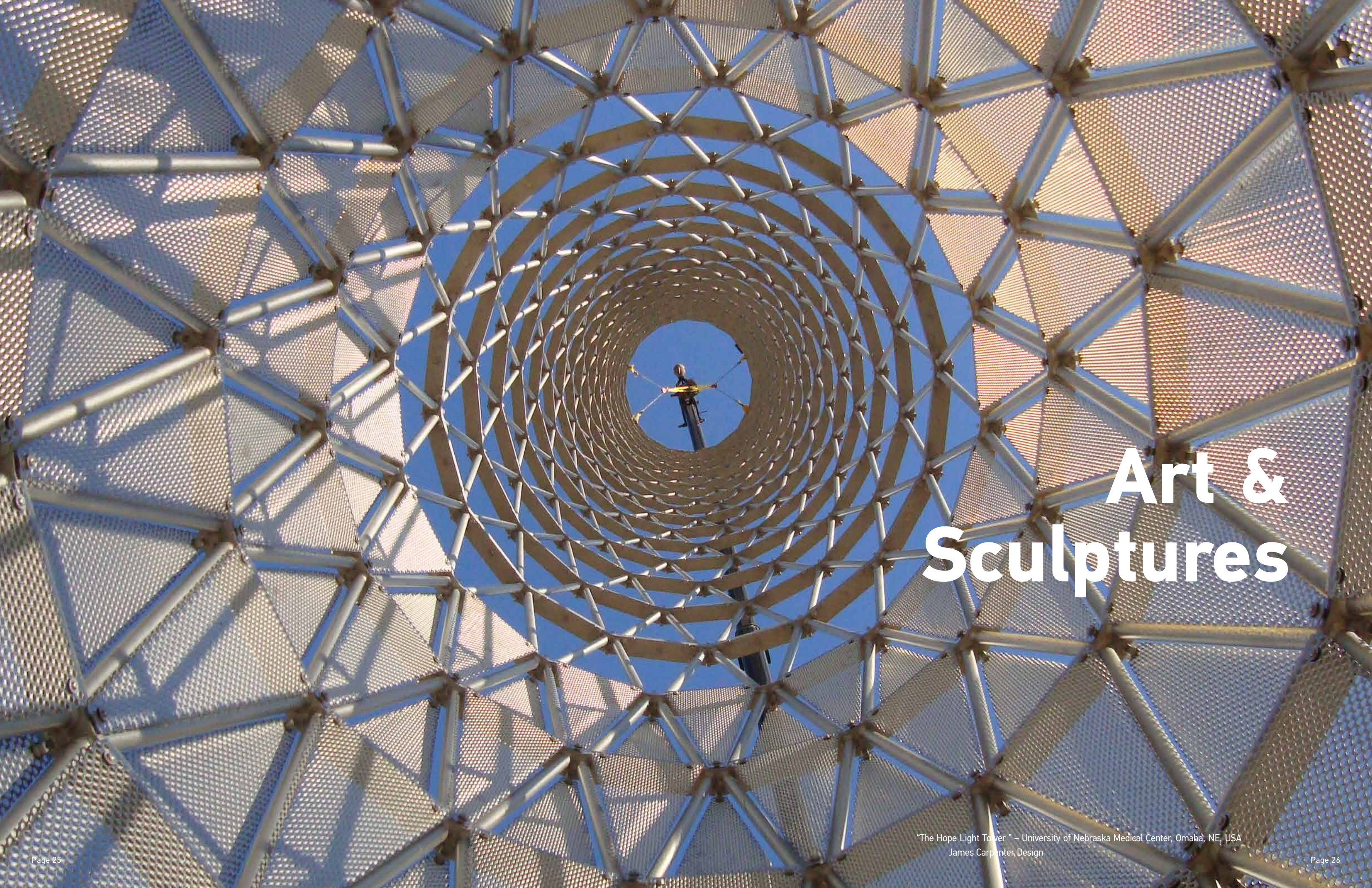
# INSPIRATION IN PRACTICE

## Where Form and Function Find Their Balance

Once you have a concept in mind, Johnson Architectural Elements helps to build the framework for the materials in the project. Rely on us to assist with calculations on horizontal and vertical applications, determine material options that work within specified percentage open areas, predict installation issues and look at load requirements—all while keeping an eye on your objectives and aesthetic preferences.

- 49. Stuyvesant Town – New York, NY, USA  
Exterior Sign
- 50. Centre ' Village – Minneapolis, MN, USA  
Exterior Facade
- 51. Firehouse 277 – Brooklyn, NY, USA  
Exterior Facade
- 52. 7 World Trade Center – New York, NY, USA  
Exterior Facade and Wall Cladding —  
A James Carpenter Design





# Art & Sculptures

"The Hope Light Tower" – University of Nebraska Medical Center, Omaha, NE, USA  
James Carpenter Design





## INSPIRATION IN PRACTICE

# Art & Sculptures

Johnson Architectural Elements has collaborated with local, national and international artists and designers to engineer exclusive monuments and structures that reflect their unique vision.

53. "The Hope" Light Tower – University of Nebraska Medical Center, Omaha, NE, USA Art Sculpture – A James Carpenter Design

54. The Yards Park – Washington, DC, USA Art Sculpture – A James Carpenter Design ©The Yards Park

PAGE 28

55. "The Hope" Light Tower – University of Nebraska Medical Center, Omaha, NE, USA Art Sculpture – A James Carpenter Design

56. The Yards Park – Washington, DC, USA Art Sculpture

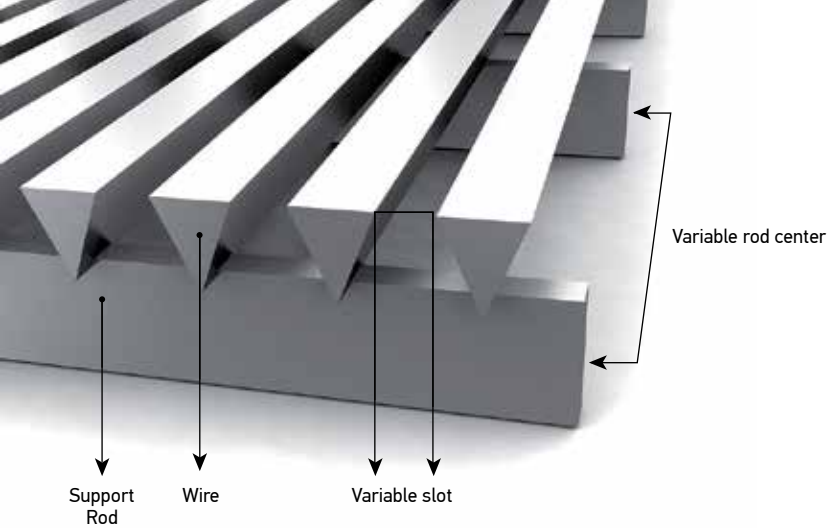
57. Anna Eggert "Here and Now" – Corner of London Circuit and Edinburgh Avenue, Civic, ACT, Australia – Art Sculpture Photo by David Paterson

*"Architecture is the opportunity to manifest the natural world's material, structural and environmental beauty."*

— James Carpenter







# Aesthetic & Functional

The manufacturing process of Johnson Architectural Elements involves the continuous welding of wires onto support rods of different shapes and sizes in order to obtain a structure that is solid, resistant and aesthetic. Countless combinations are available to architects by varying dimensions, slot sizes and tilt of rods and wires — creating a freedom in the creative process and approach.

## SHAPES AND FORMS

Screen can be flat, cylindrical or curved. Shapes can be round, straight or oblique, as well as inside out.

## FINISH

Different types of finishes are available, depending on the final application and aspect required (pickling, passivation, electro-polishing, sandblasting, powder coating, etc.).

## FRAMING

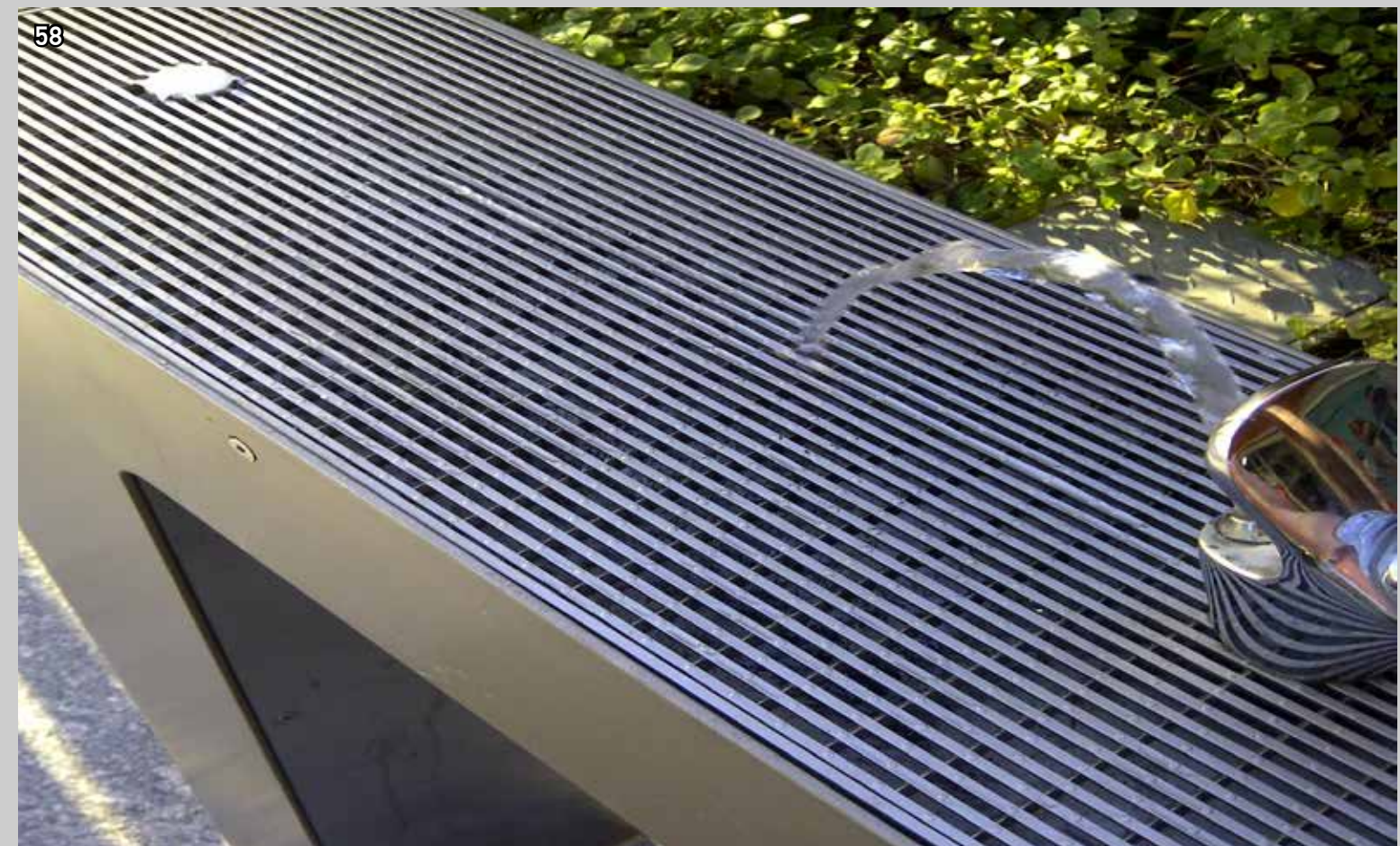
We can supply panels or a fully framed structure with all the necessary attachments. Framing increases the construction rigidity, while giving an aesthetic finish. It also makes installation easier.

## ENGINEERING CAPABILITIES

Combination of our skills, experience and advanced technologies, is an asset to many architectural firms looking at innovative concepts and designs.

## CLEANING AND MAINTENANCE

Steel Brite™ cleaner is designed specifically for the cleaning and protection of exposed stainless steel architectural pieces. Outside environmental elements can cause surface staining on stainless steel products. Architectural pieces will retain their new appearance and shine by applying the simple-to-use, environmentally-friendly, two-step process of Steel Brite and Passivator Rinse.



## INSPIRATION IN PRACTICE

## Custom Applications

Custom applications are the strength of Johnson Architectural Elements. We leverage our specialized design engineering and manufacturing expertise with the creative concepts of architects and designers to create the functional, as well as the original.

58. Flinders Street Mall – Townsville, Australia  
Drinking Fountain

59. Ramsgate RSL - Sans Souci, Australia  
Drainage Trays

60. Kitchen – Minneapolis, MN, USA  
Bench Base





**NORTH AMERICA HEADQUARTERS**

+1 651 636 3900    *Phone*  
+1 651 638 3177    *Fax*

1950 Old Hwy 8 NW  
New Brighton, MN 55112

[johnsonarchitecturalelements.com](http://johnsonarchitecturalelements.com)

Johnson Architectural Elements has sales and manufacturing locations around the world, which allows for stronger collaboration, faster production and lower shipping costs. Our team is here to support you through every step of the process, no matter where inspiration strikes.

**NORTH AMERICA**

+1 651 636 3900    *Phone*  
+1 651 638 3171    *Fax*  
[info.johnsonscreens.us@aqseptence.com](mailto:info.johnsonscreens.us@aqseptence.com)

**EUROPE**

+33 5 49021600    *Phone*  
+33 5 49021616    *Fax*  
[info.johnsonscreens.fr@aqseptence.com](mailto:info.johnsonscreens.fr@aqseptence.com)

**JAPAN**

+81 45 661 3575    *Phone*  
+81 45 661 1921    *Fax*  
[info.johnsonscreens.jp@aqseptence.com](mailto:info.johnsonscreens.jp@aqseptence.com)

**BRAZIL**

+55 11 4341 5777    *Phone*  
+55 11 4393 0414    *Fax*  
[info.johnsonscreens.br@aqseptence.com](mailto:info.johnsonscreens.br@aqseptence.com)

**AUSTRALIA - ASIA PACIFIC**

+61 7 3867 5555    *Phone*  
+61 7 3867 5566    *Fax*  
[info.johnsonscreens.au@aqseptence.com](mailto:info.johnsonscreens.au@aqseptence.com)

**INDIA**

+91 (0) 2717 618000 *Phone*  
+91 (0) 2717 618010 *Fax*  
[info.johnsonscreens.in@aqseptence.com](mailto:info.johnsonscreens.in@aqseptence.com)

**ARGENTINA**

+54 11 4714 6699    *Phone*  
+54 11 4714 2175    *Fax*  
[info.johnsonscreens.ar@aqseptence.com](mailto:info.johnsonscreens.ar@aqseptence.com)

**CHILE**

+56 02 9280700    *Phone*  
+56 02 9280705    *Fax*  
[info.johnsonscreens.cl@aqseptence.com](mailto:info.johnsonscreens.cl@aqseptence.com)

© 2018 Aqseptence Group, Inc. All rights reserved. Aqseptence Group, Inc. assumes no liability for possible errors in catalogs, brochures and other printed material. The technical data in this brochure is subject to change and for illustrative purposes only and should not be applied as published to your individual case. Aqseptence Group reserves the right to alter its products without notice. Any reproduction, distribution, display or use of this information in whole or in part without written authorization of Aqseptence Group is strictly prohibited.  
02.1400.01

